



**COLRUYTGROUP**

**WOMEN IN DATA**

**Florence Somers**





1998  
2001

**EHB - BRUSSELS**  
Professional Bachelor  
Applied Informatics

2000

Internship @  
Colruyt Group IT



2001  
2005

LACO

Consultant @ UCB

Introduced to SAS

Japan, here we come!

2005  
2009

UCB

Statistical Programming  
Team Manager

Worldwide US / UK / GER

Coaching and training

Senior statistical programmer

2009  
2012

B&D Life Sciences

Practice Manager  
Statistical Programming

Coaching and training consultants

Project manager

Senior statistical programmer

European trainer + Japan + China



2012  
2019

2019  
...

COLRUYT GROUP  
Colruyt IT

COLRUYT GROUP  
Data & Analytics

Functional Analyst  
Analytics and Data Science Team

Senior Data Science Engineer  
Transition SAS to Python



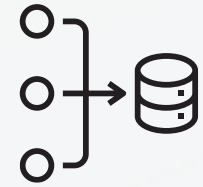
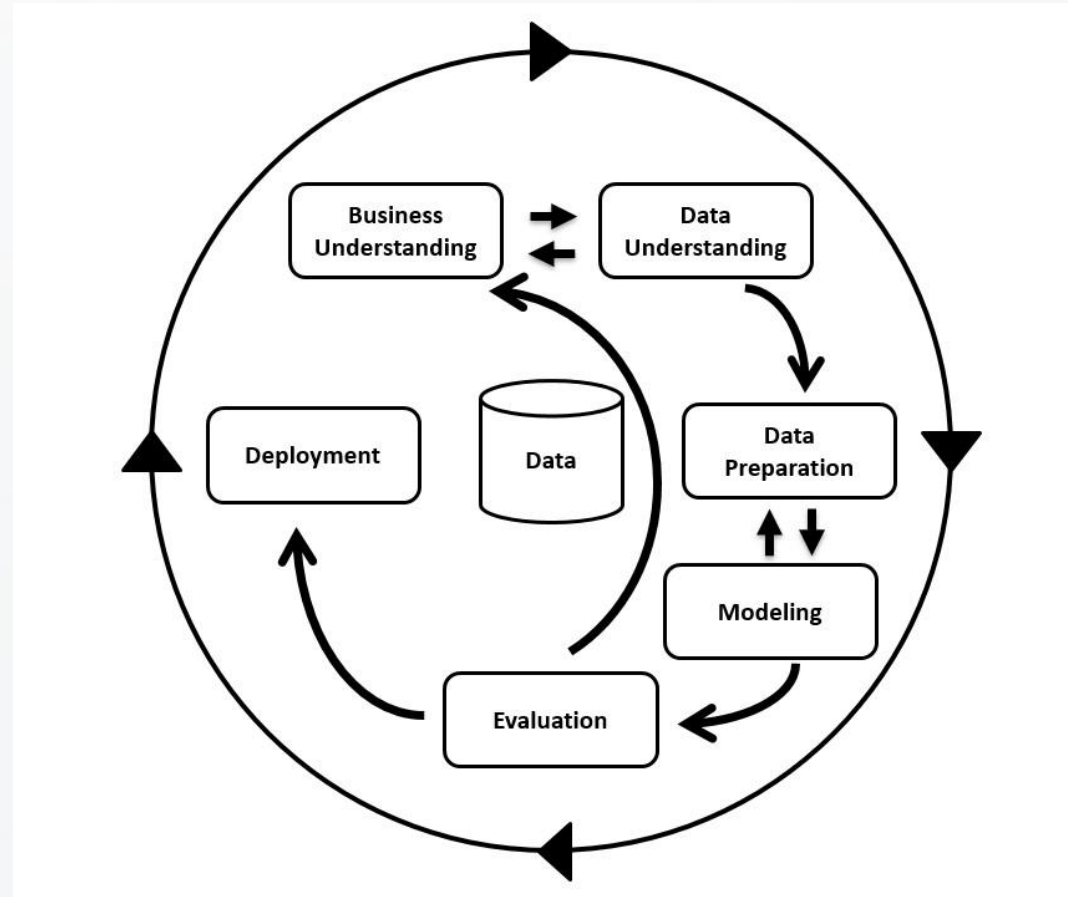
# ROLE OF A DATA SCIENCE ENGINEER



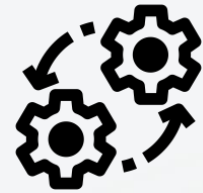
monitoring



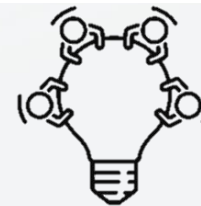
deployment



data pipelines



solution integration



knowledge group



# DATA SCIENCE ENGINEERING TEAM



**Bart Mollet**



**Florence Somers**



**Hassan Ben Lebsir**



**Kevin De Smet**



**Ruben Samaey**



**Yoni Pervolarakis**



**Khadar Khaja  
Raheemuddin Mohd**



**Maxime Logé**



**Michael Huys**



**Sai Bharath Besta  
Hyderabad (INDIA)**



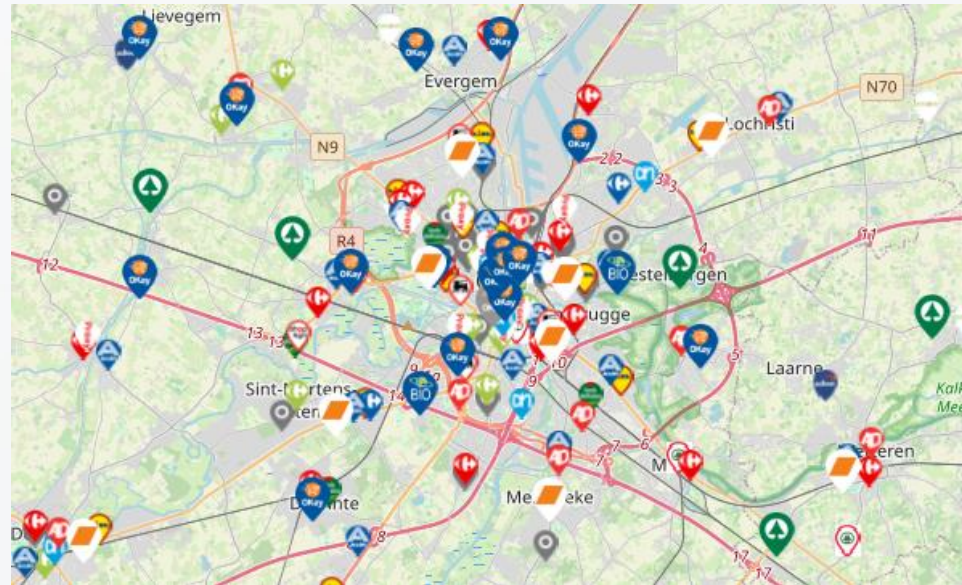
**Santhosh Aitha  
Hyderabad (INDIA)**





# STORECAST

how can we manage our food retail locations?



is a location suitable for opening a new store?

what if a competitor opens a store in the vicinity of our store?

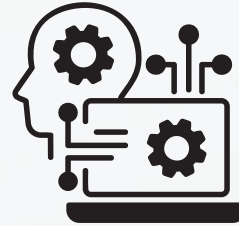
what if we take over competitor store?



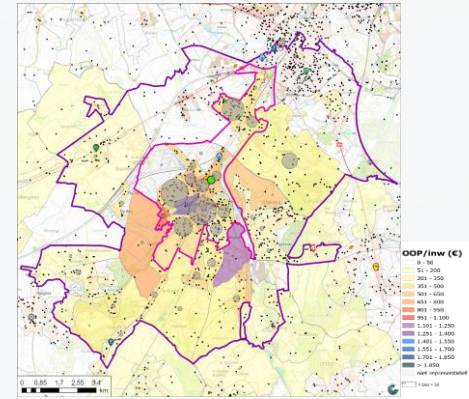
# STORECAST



store forecasting



an analytical model



calculates chance  
to visit a store



predict how much  
money will be spent



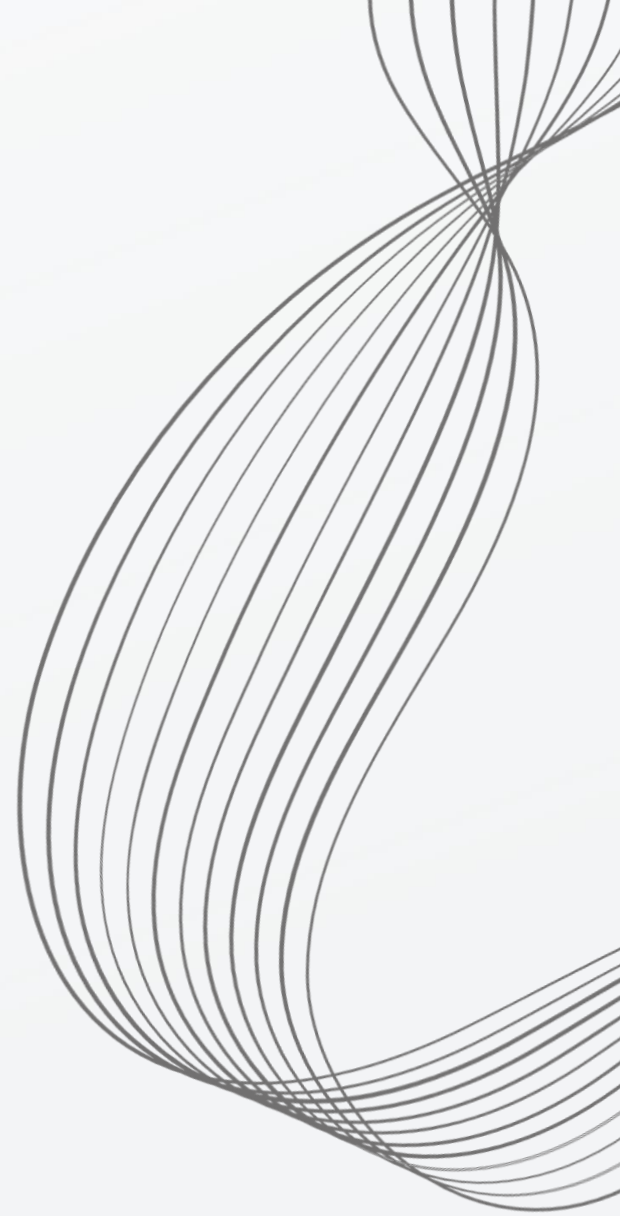
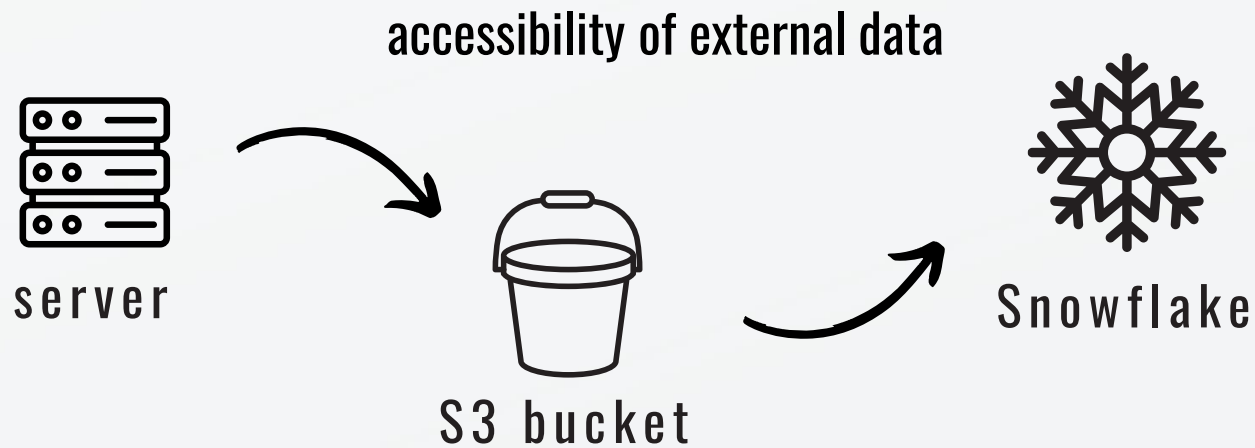
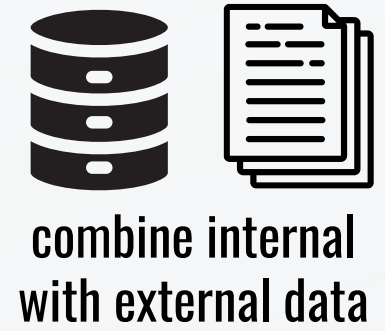
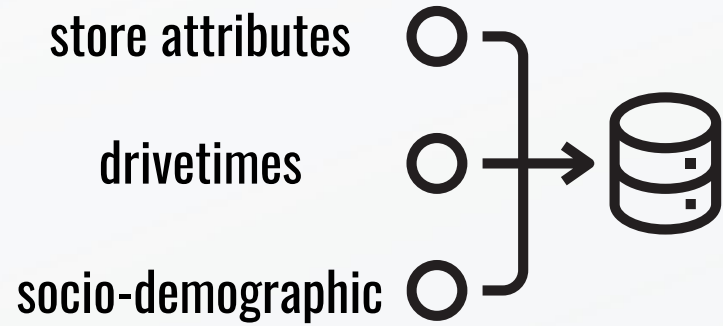
per neighborhood





# STORECAST

my role as a data science engineer





**THANK YOU**

